



## GSA Healthcare

# VA Domiciliary SORCC

So. OR Rehabilitation Center  
White City, OR

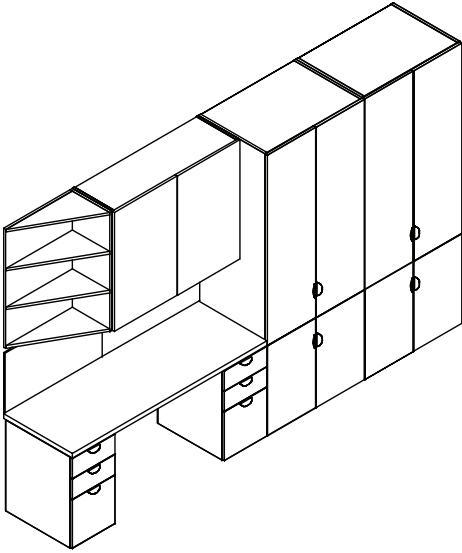
### Designer

Interior Office Concepts & Justin Steffens

### Product Scope

112 workstations outfitted with Magna Design's Series Fifty Desks, Overheads, and Wardrobes

Each year, the Veterans' Administration's (VA) Domiciliary Southern Oregon Rehabilitation Center & Clinics (SORCC) provide expert medical care to over 40,000 veterans of the United States armed forces. Located in White City, Oregon, approximately 16% of the inpatient population are visitors from across the United States. The facility includes 600 residential rehabilitation beds and an outpatient department that provides mental health services and primary care. The physicians and medical staff at SORCC strive for quality care and patient satisfaction while administering physical and vocational rehabilitation, substance abuse treatment programs, and home-based medical assistance.



SORCC works with a limited government budget while still being held to the same standards as private hospitals across the country. Equipment at the facility supports a dedicated medical staff who addresses a high volume of patients on a daily basis. Furniture installed at SORCC must facilitate delivery of quality patient care and employee satisfaction while complying with health regulations and a strict budget.

Magna Design by Watson partnered with Interior Office Concepts to achieve employee wellness and increased patient satisfaction. Magna Design SERIES FIFTY desks, wardrobes and overheads are modular in design allowing for customization within each workspace and patient room, and durable laminate finishes and drawers lined with vinyl enable SORCC personnel to sterilize office areas. Additionally, by tapering wall-mounted overheads into windows, Watson and IOC guaranteed the preservation of natural light within patient areas.

**Magna Design supplied the VA SORCC with furniture to meet budget, health regulations, general employee wellness, and patient care needs.**

